

How to Register in SoMachine V4.1



> How to register

1. Create your SLP account

Go to www.schneider-electric.com/licensing and choose "Create your Account". Enter your email that will be your user ID for your SLP account

2. Fill in the mandatory fields

> Validate your account

3. Check your email and click on the link

From: **src-**
eeurope@schneider-electric.com
To: XXXXXXXXX
Subject: Schneider Electric user account creation

Thank you for requesting the creation of a Schneider Electric user account. Please [click on this link](#) to complete the account creation.

4. Once you have activated your account you can log into it

To change or request your password click on "Forgot your password?".

Your **email address** is your account ID.

> What is the Software License Portal (SLP)

Your **Software License Portal** (SLP) is a cloud based service of Schneider Electric that provides universal access to your Schneider Electric Software licenses on the web. The SLP allows to overview and manage your licenses and registrations.

> Why register?

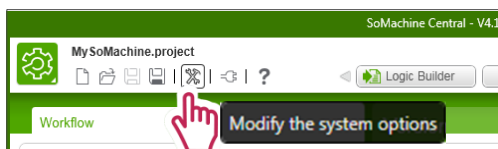
In order to activate your **SoMachine V4.1** software you need to create and validate your SLP account. You can find bellow all the steps to create and validate your account.

> Registration process overview

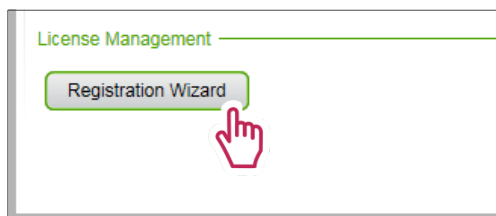


> Register inside SoMachine

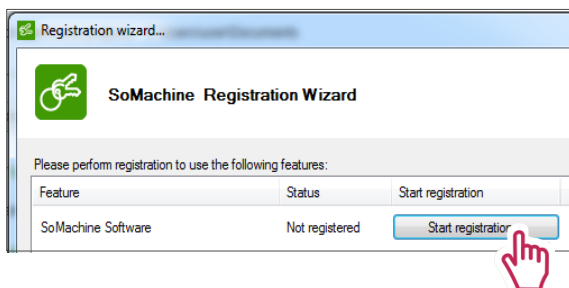
5. Open the “System options” window



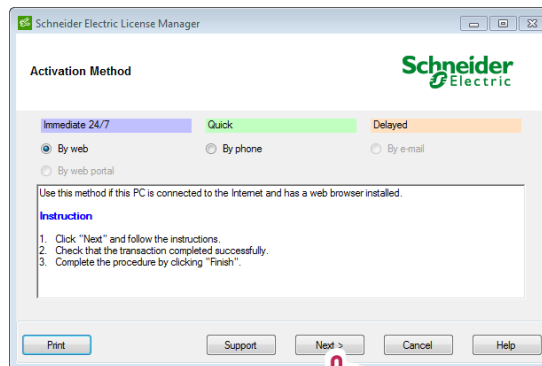
6. Open the Registration Wizard



7. Start the registration



8. Choose your favorite way to register



9. Follow the indications



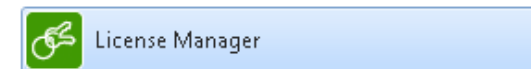
To Activate **By Web**: Enter the email address used to create your Software License Portal account and finally press next to activate SoMachine V4.1.



To activate **By Phone**: Call the Software Registration Center of your area and give the operator the requested information. Press next, insert the received “Short Code Response” code and finally press next again to activate SoMachine V4.1.

10. Your software is registered

By opening the **License Manager** tool (automatically installed on your computer with **SoMachine V4.1**), you can see from now your registered software. Just start the License Manager tool from the Windows program list.



That's it!



Software Registration Centers

Europe | English, German | 8:00 - 18:00 (CET*)

☎ +420 281 088 696 📠 +420 281 088 697

✉ src-eeurope@schneider-electric.com

North and Central America | English | 8:00 - 18:00 (EST*)

☎ +1 888 266 8705 (from US and Canada) 📠 +1-978-975-9479

☎ +1 978 975 9755 (from other countries)

✉ src-americas@schneider-electric.com

South America | English | 8:00 - 18:00 (CET*)

☎ +420 281 088 696 📠 +420 281 088 697

✉ src-southamerica@schneider-electric.com

Asia and Pacific | English | 8:00 - 18:00 (AEST*)

☎ +61 2 9125 8531 📠 +61 2 9888 3841

✉ src.asiapacific@schneider-electric.com

France | French | 8:00 - 18:00 (CET*)

☎ 0825 012 999 (national) 📠 +33 173 024 722

☎ +33 492 088 268 (international)

✉ global-src-france@schneider-electric.com

Italy | Italian | 8:00 - 18:00 (CET*)

☎ +39 011 407 3333 📠 +39 011 22 81 340

✉ it-registrazione-software@schneider-electric.com